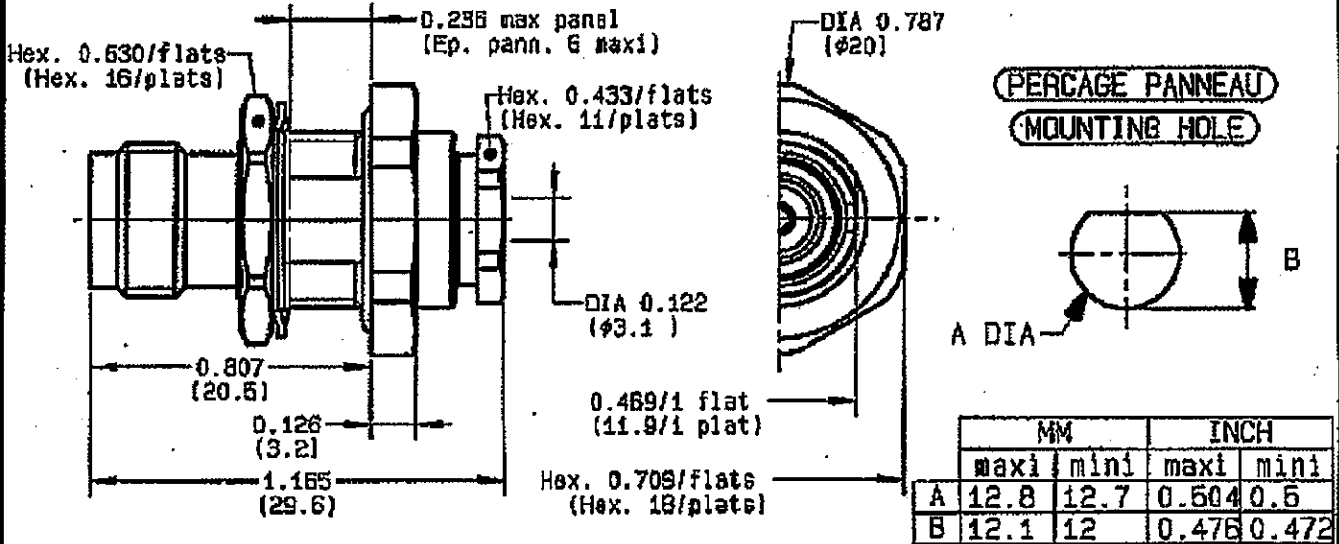


**STRAIGHT BULKHEAD JACK PANEL SEAL**  
**REAR MOUNT CLAMP TYPE - CABLE 2.6/50**

**R143.324.000**  
**SERIES TNC**



NOMINAL IMPEDANCE	50	Ω
FREQUENCY RANGE	0-11	GHz
TEMPERATURE RATING	-65/+165	°C
V.S.W.R	*1.30 +	0 x F(GHz)Maxi
RF INSERTION LOSS	0.06	√F(GHz) dB Maxi
VOLTAGE RATING	335	V <sub>eff</sub> Maxi
DIELECTRIC WITHSTANDING VOLTAGE	1000	V <sub>eff</sub> Mini
INSULATION RESISTANCE	5000	M ΩMini
HERMETIC SEAL	NA	Atm.cm <sup>3</sup> /s
LEAKAGE (pressurized only)	NA	
MECHANICAL DURABILITY	500	Cycles
WEIGHT	23.2	gr
SPECIFICATION	LEA03C0CTNC-201	

CABLES : KX 22A  
 RG 178  
 RG 187  
 RG 188  
 RG 316

OTHERS CHARACTERISTICS

\* VSWR < 1.40 for frequency band: 1.4GHz-4GHz  
 \* VSWR < 1.80 for frequency band: 4GHz-11GHz

CABLE RETENTION	110	N Mini
CENTER CONTACT RETENTION		
Axial force - mating end	27	N Mini
Axial force - opposite end	27	N Mini
Torque	NA	cm.N Mini
RECOMMENDED TORQUES		
Mating	NA	cm.N
Panel nut	370	cm.N
Clamp nut	450	cm.N

CONNECTOR PARTS MATERIALS

BODY	BRASS
OUTER CONTACT	
CENTER CONTACT	BERYLLIUM COPPER
INSULATOR	PTFE
BASKET	SILICONE RUBBER
OTHERS PIECES	BRASS

FINISH

NICKEL 2
GOLD 0.5 OVER NICKEL 2
-
-
NICKEL 2

(all values are given in micrometers)

LELEU

ISSUE  
0825V

CREATION DATE  
07/01/1991

FILE PART-NUMBER



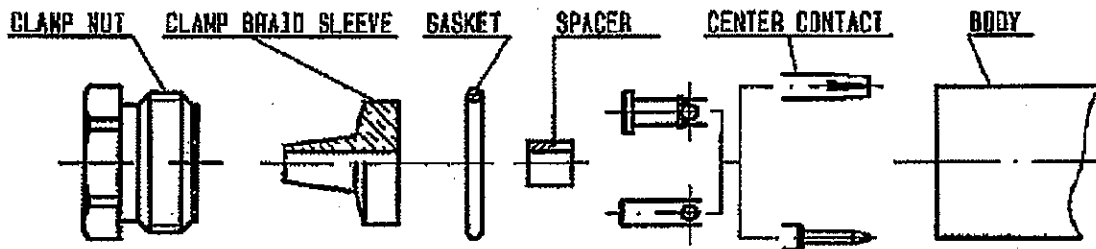
**RADIALL®**

The information given here is subject to change without notice. Design changes may be in order to improve the product.

Connect to the future

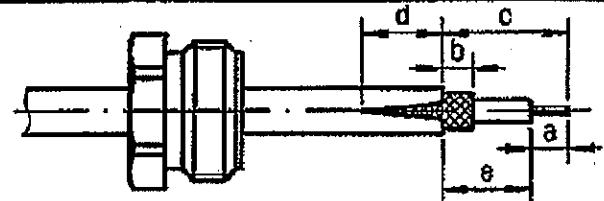


**R143.324.000**  
 ISSUE 0825V SERIES TNC



①

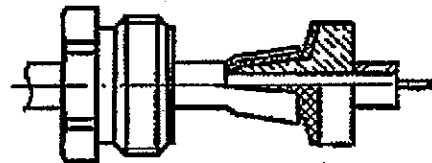
Slide clamp nut onto cable .  
 Strip the cable .  
 Cut 2 slots in the jacket  
 if necessary .



Stripping	a	b	c	d	e
inch	0.157	0.079	0.354	0	0.197
mm	4	2	9		5

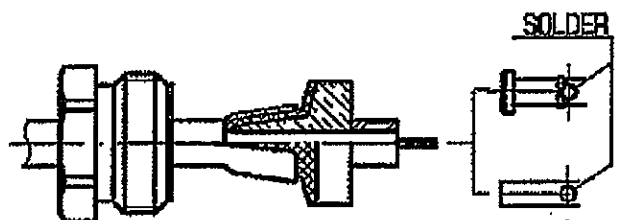
②

Slide the clamp braid sleeve between  
 cable dielectric and braid .  
 Cut the braid flush with the clamp  
 braid sleeve .  
 Slide the spacer onto the cable .



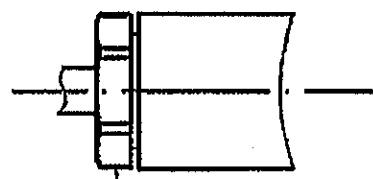
③

Solder center contact onto cable  
 center conductor .  
 Slide back nut over clamp assembly .



④

Mount gasket into connector .  
 Screw sub-assembly into the connector  
 body .  
 ( recommended coupling torque 450 N.cm )  
 39.82 in.lb



Hex. : 11.00 mm /flats  
 Hex. : 0.433inch /flats

LELRO